



Royal Netherlands Academy of Arts and Sciences (KNAW) KONINKLIJKE NEDERLANDSE AKADEMIE VAN WETENSCHAPPEN

Introducing the Data Station Life Sciences: Find, store, and protect your data

Hof, Cees H.J. ; Ferguson, K.B.

2024

document version

Publisher's PDF, also known as Version of record

document license

CC BY

[Link to publication in KNAW Research Portal](#)

citation for published version (APA)

Hof, C. H. J., & Ferguson, K. B. (2024). *Introducing the Data Station Life Sciences: Find, store, and protect your data*. Poster session presented at Netherlands Annual Ecology Meeting, Lunteren.

General rights

Copyright and moral rights for the publications made accessible in the public portal are retained by the authors and/or other copyright owners and it is a condition of accessing publications that users recognise and abide by the legal requirements associated with these rights.

- Users may download and print one copy of any publication from the KNAW public portal for the purpose of private study or research.
- You may not further distribute the material or use it for any profit-making activity or commercial gain.
- You may freely distribute the URL identifying the publication in the KNAW public portal.

Take down policy

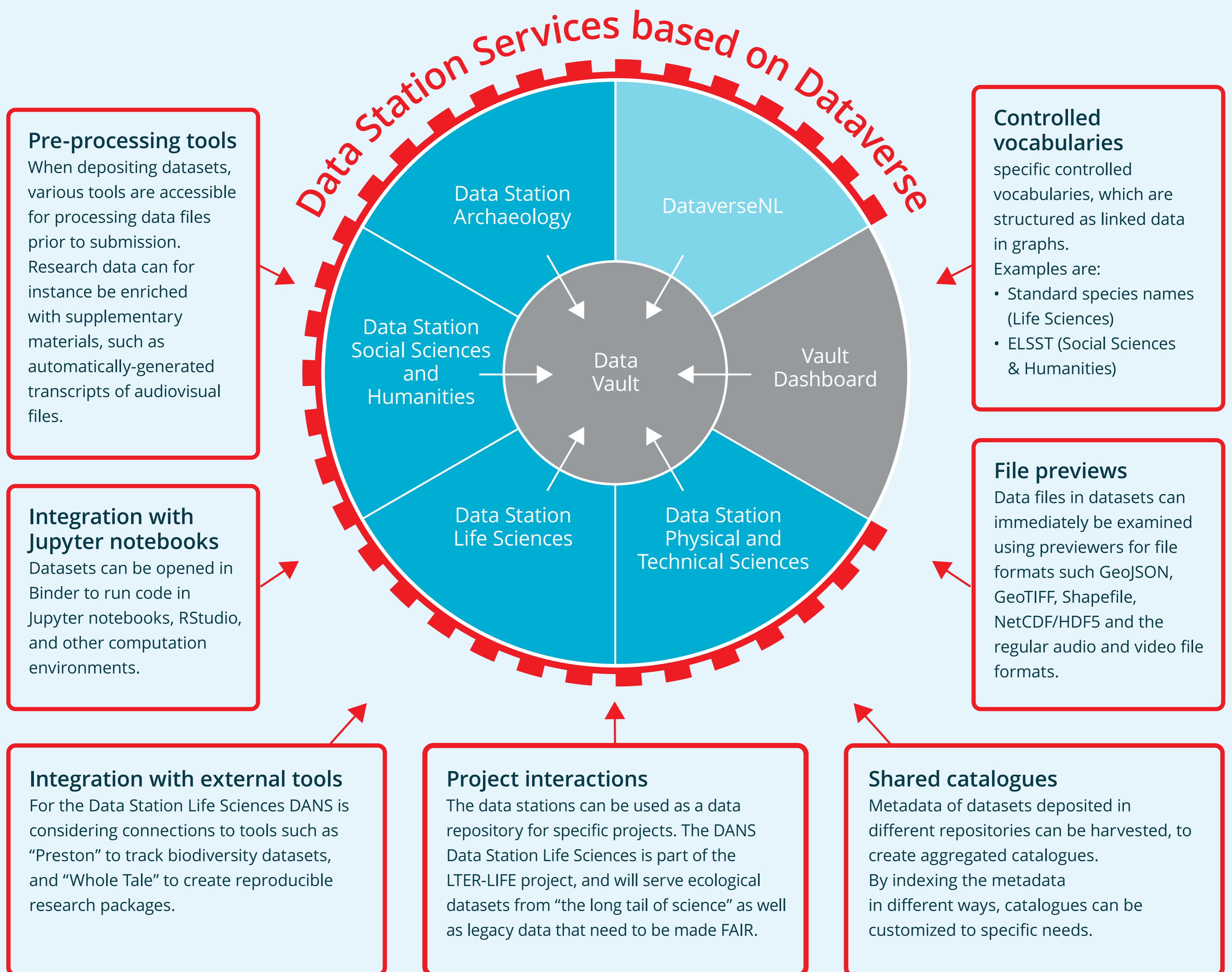
If you believe that this document breaches copyright please contact us providing details, and we will remove access to the work immediately and investigate your claim.

E-mail address:

pure@knaw.nl

Data Stations

Using Dataverse to support the Dutch FAIR data landscape



Support for FAIR Data Principles

The DANS Data Stations make your data Findable, Accessible, Interoperable and Reusable by default.

