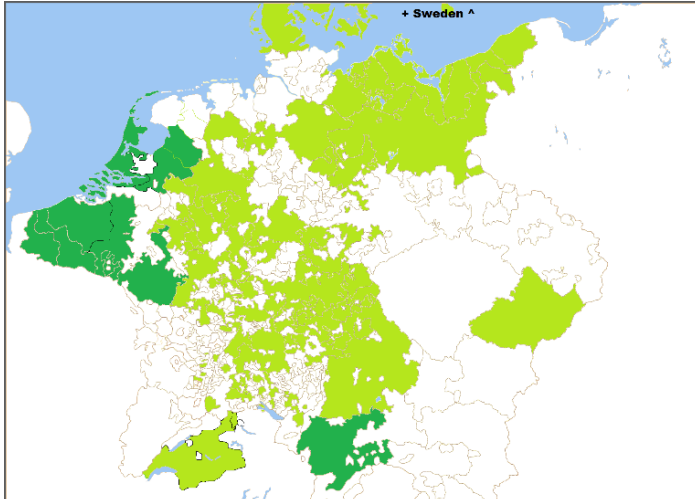


Entangled Ordinances – Linked Open Data for Legal History

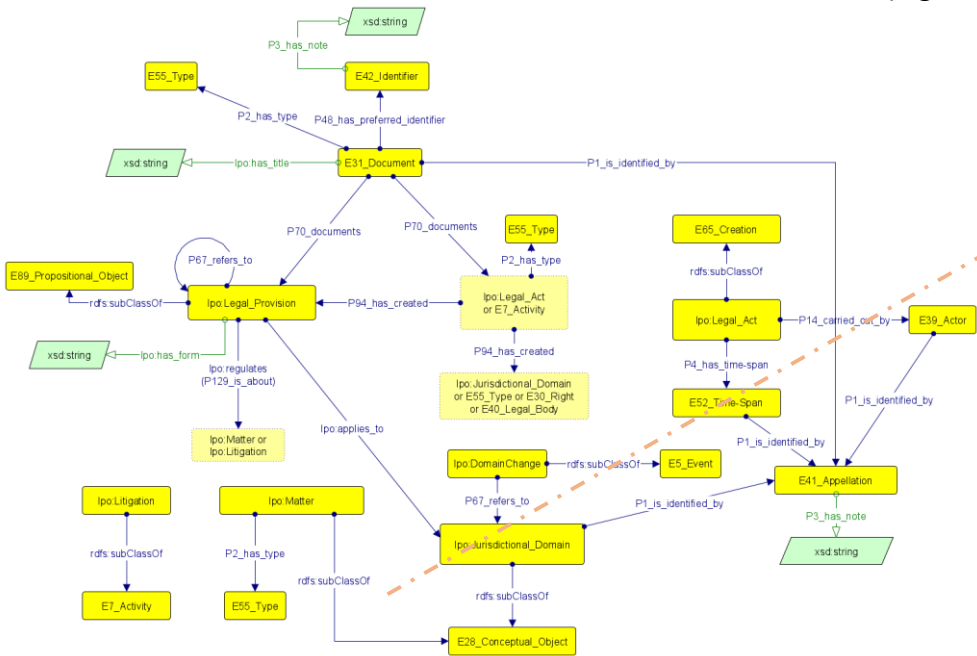
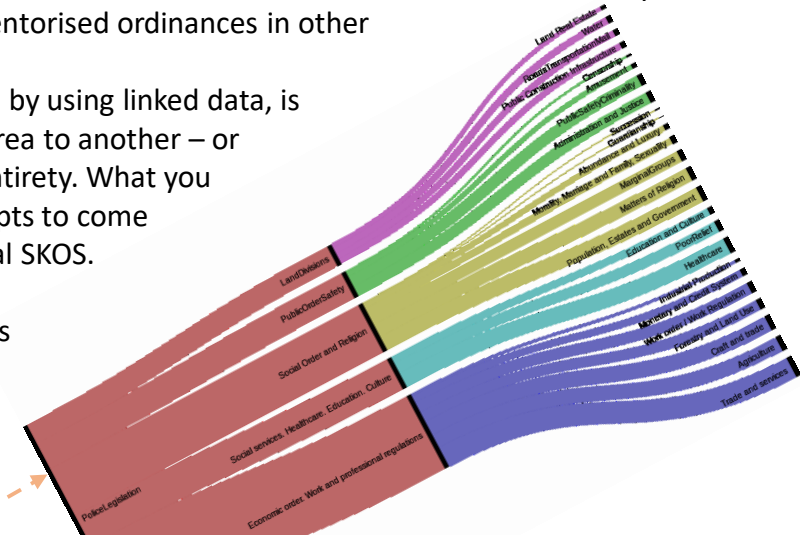
Dr. Andreas Wagner¹ and Dr. C. Annemieke Romein²

¹ Max-Planck-Institute for European Legal History; ² KNAW Huygens ING



In the 1990s the Max-Planck-Institute for European Legal History initiated a large study into police ordinances (*Policeygesetzgebung*) in 68 early modern states (light green on the map), leading to an inventory-dataset of metadata on over 200,000 texts. More recently, several independent initiatives have also inventorised ordinances in other areas (dark green).

A hypothesis that could be answered, by using linked data, is which topics were copied from one area to another – or even if legislation was copied in its entirety. What you see on this poster, are our first attempts to come up with an ontology and a multilingual SKOS. Ideally, the ontology (and LOD) would integrate various levels of jurisdictions and norms (legislation).



MAX-PLANCK-INSTITUT FÜR EUROPÄISCHE RECHTSGESCHICHTE		
Repertorium der Policeyordnungen		
Information Suche Erweiterte Suche Listenansicht		
JISG FFM, GRO, Nr. 165, fol. 160	Frankfurt am Main 00.00.1600	Rat der Stadt (1555-1806) Ordnung
2.4 Amtsführung/Amtsmitbrauch	JISG FFM, GRO, Nr. 165, fol. 162 f.	Rat der Stadt (1555-1806) Instruktion
4.5 Müller/Mühlten, 4.6 Handelsbedingungen	JISG FFM, GRO, Nr. 172	Rat der Stadt (1555-1806) Zollrolle
4.6 Zölle	JISG FFM, GRO, Nr. 175	Rat der Stadt (1555-1806) Policeyordnung
1.2 Aufenthalt, 1.2 Auswanderung, 1.2 Einwanderung/Ansiedlung, 1.2 Gemeindeverfassung, 1.3 Führende Leute, 2.2 Gewalttaten, 2.2 Sicherung Land, 4.6 Firkäuf, 4.7 Judenwucher, 4.7 Kreditwesen, 5.3 Liegenschaften, 5.4 Bauwesen, 5.4 Feuerpolizei	JISG FFM, GRO, Nr. 352	Rat der Stadt (1555-1806) Instruktion
4.6 Firkäuf, 4.6 Handelsbedingungen, 4.6 Maße & Gewichte	JISG FFM, GRO, Nr. 467	Rat der Stadt (1555-1806) Verordnung
2.3 Zensur, 4.6 Handelsbedingungen, 4.6 Messe	Bücher/Schmid U1, S. 171-174	

For more info:

- <https://w3id.org/rg-mpg-de/polmat/scheme>
- <https://www.rg.mpg.de/research-project/repertory-of-policeyordnungen>