



# Royal Netherlands Academy of Arts and Sciences (KNAW)

KONINKLIJKE NEDERLANDSE  
AKADEMIE VAN WETENSCHAPPEN

## Snowmelt

Verhoeven, Mo

2021

### **document version**

Publisher's PDF, also known as Version of record

[Link to publication in KNAW Research Portal](#)

### **citation for published version (APA)**

Verhoeven, M. (2021). *Snowmelt*. <https://www.arcticstation.nl/weblog.php?nr=2147>

### **General rights**

Copyright and moral rights for the publications made accessible in the public portal are retained by the authors and/or other copyright owners and it is a condition of accessing publications that users recognise and abide by the legal requirements associated with these rights.

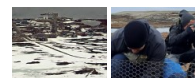
- Users may download and print one copy of any publication from the KNAW public portal for the purpose of private study or research.
- You may not further distribute the material or use it for any profit-making activity or commercial gain.
- You may freely distribute the URL identifying the publication in the KNAW public portal.

### **Take down policy**

If you believe that this document breaches copyright please contact us providing details, and we will remove access to the work immediately and investigate your claim.

### **E-mail address:**

[pure@knaw.nl](mailto:pure@knaw.nl)

[\[previous\]](#)[\[next\]](#)

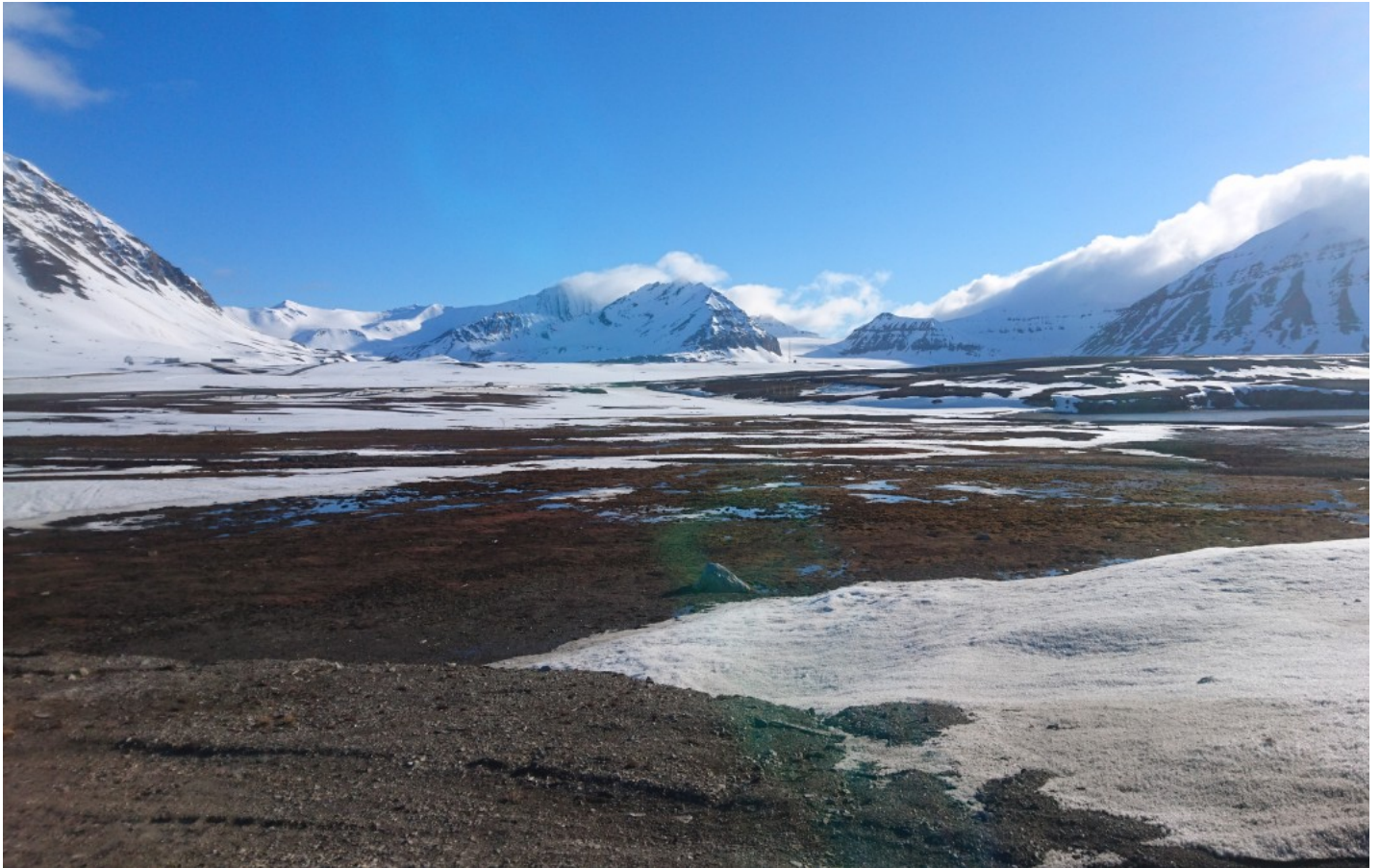
## snowmelt

By Mo Verhoeven

I am new to Arctic ecology, but I have been reading a lot about it. In this field, the most widely used and talked about environmental variable are the temperature and the data have therefore kept a close look on the snowmelt and I have been surprised by how patchy it was across the area.



Picture above 9 June 2021 20:11, picture below 11 June 2021 20:13



Picture above 11 June 2021 20:13, picture below 18 June 2021 18:17



[\[home\]](#) [\[weblog\]](#) [\[science\]](#) [\[people\]](#) [\[station\]](#) [\[ny-ålesund\]](#) [\[sightings\]](#) [\[sitemap\]](#) [\[nederlands\]](#)



[\[previous\]](#)

[\[present\]](#)

[\[next\]](#)

[\[overview\]](#)



20210621, 07:20  
snow melt



20210621, 12:00  
snowmelt



20210622, 15:00  
new exclosures



all items shown  
with small pics

---